

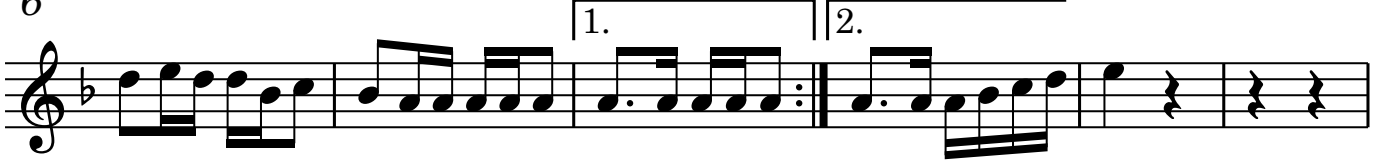
Dam Başında Taş Mı Olur

1 Kıta

♩ = 90

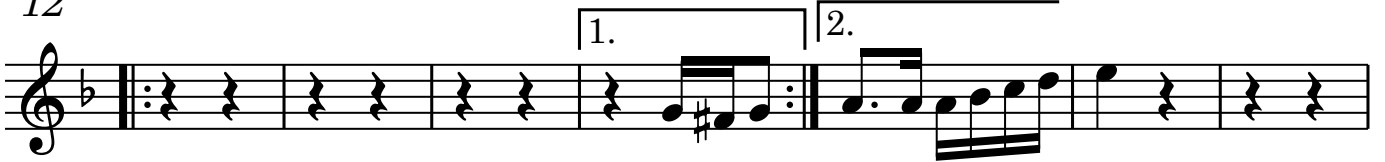


6



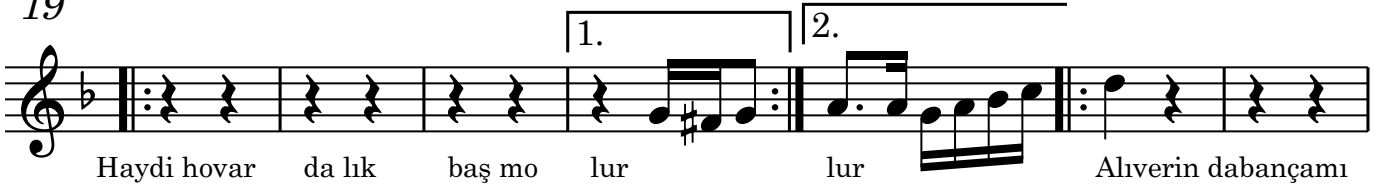
Daş başında daşmolur

12



Haydi bundan ince kaş mo lur lur Bundan ince kaş olsa

19



Haydi hovar da lık baş mo lur lur Aliverin dabançamı

26



oyma dan öldüm bittim ben gençlime doy ma dan